

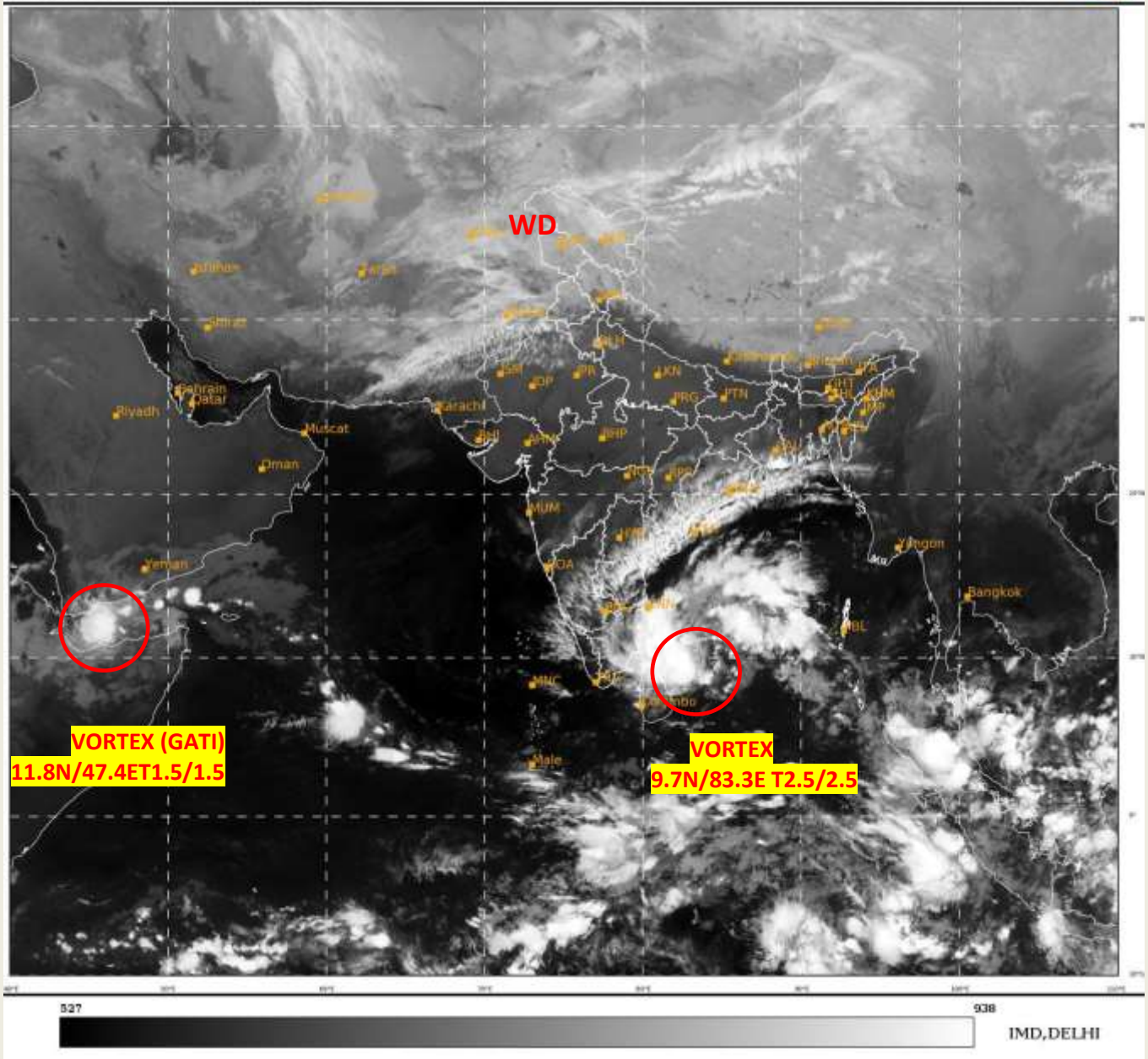


**SATELLITE BULLETIN BASED ON SATELLITE IMAGERIES
AND PRODUCTS**

24.11.2020 TIME 0000 UTC

SAT : INSAT-3D IMG
IMG_TIR1 10.8 um
LIC Mercator

24-11-2020/(0000 to 0026) GMT
24-11-2020/(0530 to 0556) IST



TCIN50 DEMS 240000

SATELLITE BULLETIN BASED ON INSAT-3D PIC OF 240000 UTC (.)

REGION COVERED BETWEEN LAT 50.0°N TO 30.0°S AND LONG 40.0°E TO 125.0°E (.)

SALIENT FEATURES:-

VORTEX OVER SOUTH WEST BAY & N/HOOD:-

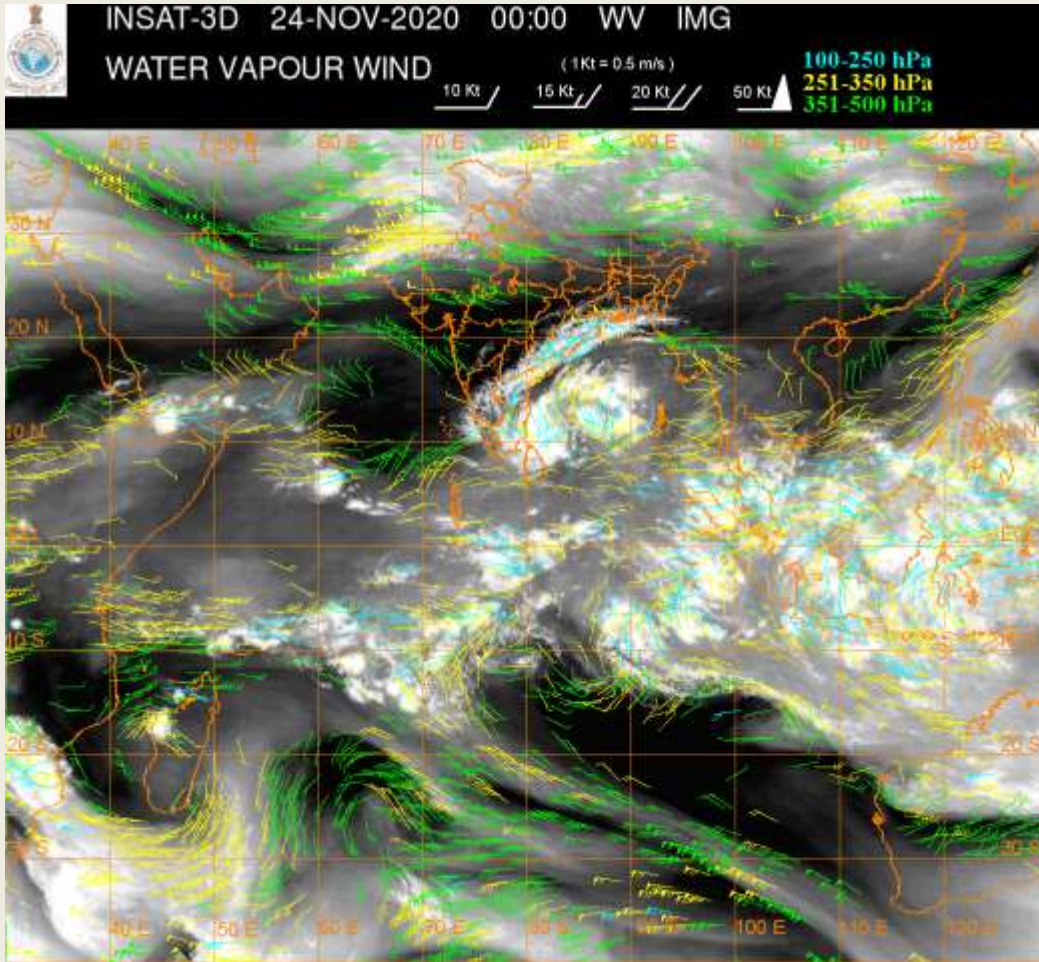
VORTEX OVER SW BAY & N/HOOD CENTERED **9.7N/83.3E** (.) INTENSITY **T2.5/2.5** (.) SHEAR PATTERN (.) ASSTD SCT TO BKN LOW/MED CLOUDS WITH EMBDD INT TO V INT CONVTN OVER S ADJ C BAY & BET LAT 8.0N TO 14.0N LONG 79.0E TO 84.0E (.) MINIMUM CTT MINUS 93 DEG C (.)

VORTEX (GATI) OVER GULF OF ADEN ADJ N SOMALIA COAST & N/HOOD:-

VORTEX (GATI) OVER GULF OF ADEN ADJ N SOMALIA COAST & N/HOOD CENTERED **WITHIN HALF A DEG OF 11.8N/47.4E** (.) **T1.5/1.5** (.) CONVECTIVE CLOUDS HAVE SHEARED AWAY TO THE NORTH-WEST OF THE SYSTEM (.) ASSTD SCT LOW/MED CLOUDS WITH EMBDD INT TO V INT CONVTN OVER N SOMALIA ADJ GULF OF ADEN & N/HOOD (.) MINIMUM CTT MINUS 75 DEG C (.)

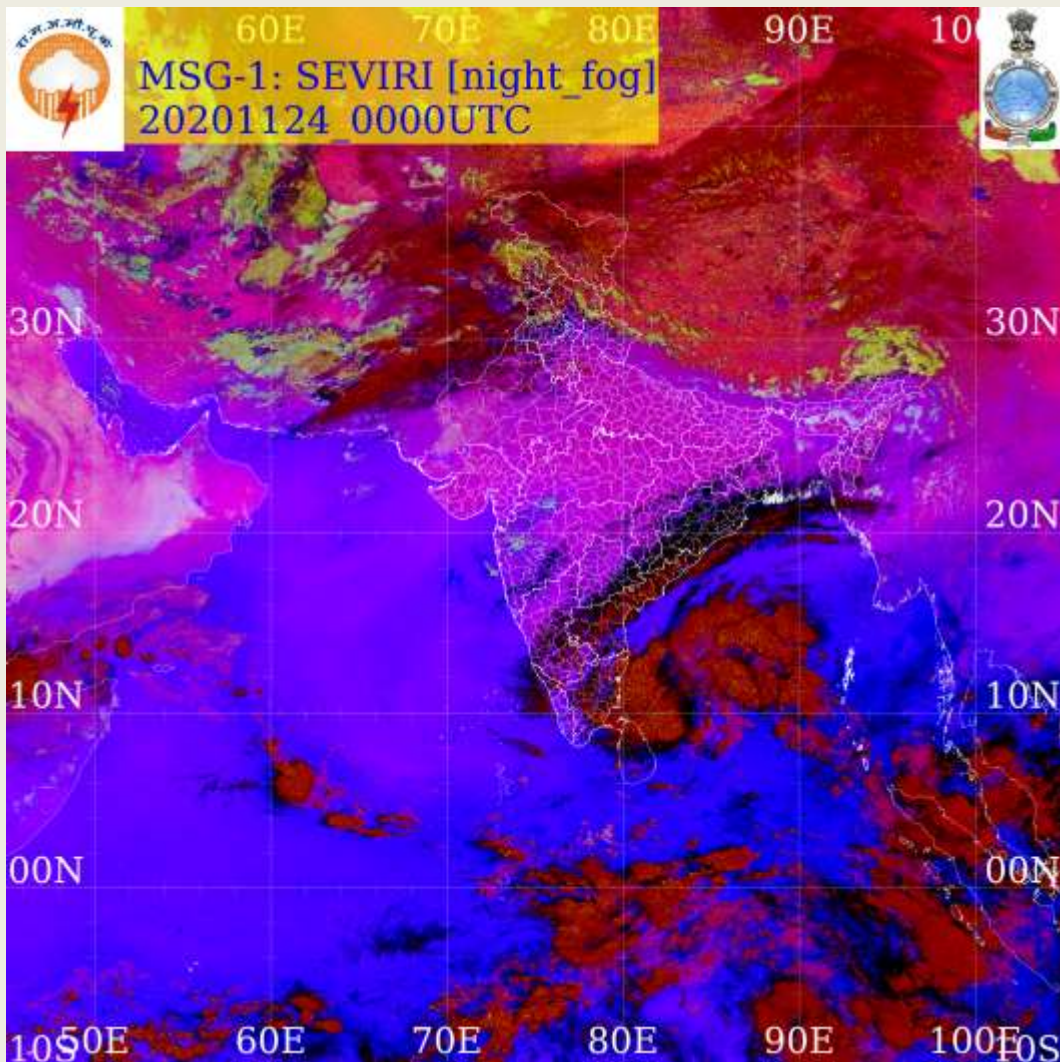
WESTERN DISTURBANCE (WD):-

SCT TO BKN MULTILAYERED CLOUDS OVER AFGAN PAK J&K HP PJB N RAJ HARY UTRKND TIBET ADJ CHINA AND N/HOOD IN ASSW **WD** OVER THE AREA (.)



FOG/LOW CLOUDS:-

NIGHT FOG RGB AT 0000 UTC INDICATES SCT FOG/LOW CLOUDS OVER S ASSAM W MEGHA (.)



CLOUDS DESCRIPTION WITHIN INDIA:-

NORTH:-

SCT LOW/MED CLOUDS WITH EMBDD MOD TO INT CONVTN OVER N J&K SW PJB NW UP (.)
SCT LOW/MED CLOUDS WITH EMBDD WK TO MOD CONVTN OVER S J&K HP UTRKND
REST PJB HARY DLH (.)

EAST:-

SCT LOW/MED CLOUDS WITH EMBDD INT TO V INT CONVTN OVER ORS (.) SCT LOW/MED
CLOUDS WITH EMBDD MOD TO INT CONVTN OVER S CHTGH S GWB (.) SCT LOW/MED
CLOUDS WITH EMBDD ISOL WK TO MOD CONVTN OVER S JHRKND N CHTGH N GWB SKM
ARUPR MANI MIZO TRP (.) SCT LOW/MED CLOUDS OVER REST NE STATES (.)

WEST:-

SCT LOW/MED CLOUDS WITH EMBDD MOD TO INT CONVTN OVER N RAJ (.) SCT LOW/MED
CLOUDS WITH EMBDD ISOL WK CONVTN OVER MAHA (.)

SOUTH:-

SCT TO BKN LOW/MED CLOUDS WITH EMBDD INT TO V INT CONVTN OVER N RYLSM
COTL AP (.) SCT LOW/MED CLOUDS WITH EMBDD MOD TO INT CONVTN OVER KRNTK S
TLNGN S RYLSM N KER TN (.) SCT LOW/MED CLOUDS WITH EMBDD WK CONVTN OVER S
KER NICOBAR ILS (.) SCT LOW/MED CLOUDS OVER LKSDP ANDAMAN ILS (.)

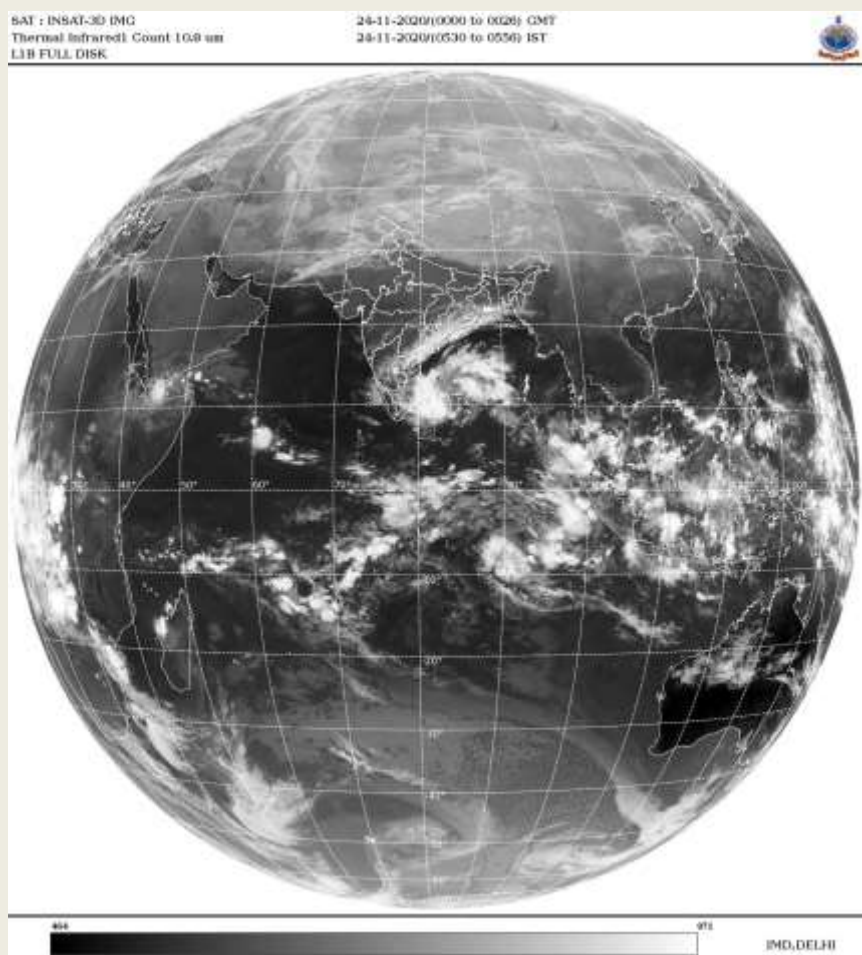
ARABIAN SEA:-

SCT LOW/MED CLOUDS WITH EMBDD INT TO V INT CONVTN OVER SW ARSEA AND MOD
TO INT CONVTN OVER SE ARSEA (.)

BAY OF BENGAL & ANDAMAN SEA:-

SCT TO BKN LOW/MED CLOUDS WITH EMBDD INT TO V INT CONVTN OVER BAY (.) SCT
LOW/MED CLOUDS WITH EMBDD MOD TO INT CONVTN OVER ANDAMAN SEA (.)

CLOUDS DESCRIPTION OUTSIDE INDIA:-



SCT LOW/MED CLOUDS WITH EMBDD MOD TO INT CONVTN OVER COMORIN SRI LANKA GULF OF MANNAR PALK STR PAK TIBET CHINA YELLOW SEA SUMATRA STR OF MALACCA MALAY PENINSULA GULF OF THAILAND S CHINA SEA BORNEO JAVA ILS & SEA CELEBES ILS & SEA PHILIPPINES SULU SEA N MADAGASCAR AND OVER INDIAN OCEAN BET LAT 5.0S TO 17.5S LONG 43.0E TO 120.0E (.)

TOO 24/0730EF=

NNNN

LEGEND:-

REGION	NORTH	J&K HP PJB HARY DLH UP UTRKND
	EAST	BHR JHRKND CHTGH ORS WB SKM NORTH-EAST STATES
	WEST	RAJ MP GUJ MAHA GOA
	SOUTH	TLNGN AP KRNTK KER TN LKSDP ANDAMAN & NICOBAR ILS

CLOUD DISTRIBUTION	ISOL	ISOLATED (LESS THAN 25%)
	SCT	SCATTERED (25 TO 50%)
	BKN	BROKEN (51 TO 75%)
	SLD	SOLID (GREATER THAN 75%)
TEMPERATURE	CTT	CLOUD TOP TEMPERATURE
CONVECTION	WK CONVTN	WEAK CONVECTION (CTT GREATER THAN -25°C)
	MOD CONVTN	MODERATE CONVECTION (CTT BETWEEN -25°C TO -40°C)
	INT CONVTN	INTENSE CONVECTION (CTT BETWEEN -41°C TO -70°C)
	V INT CONVTN	VERY INTENSE CONVECTION (CTT LESS THAN -70°C)
METEOROLOGICAL SUB-DIVISION, STATES, & UTS	ARUPR	ARUNACHAL PRADESH
	BHR	BIHAR
	CHTGH	CHHATTISGARH
	COTL AP	COASTAL ANDHRA PRADESH
	COTL KRNTK	COASTAL KARNATAKA
	COTL ORS	COASTAL ORISSA
	GUJ	GUJARAT
	GWB	GANGETIC WEST BENGAL
	HARY	HARYANA

	HP	HIMACHAL PRADESH
	J&K	JAMMU AND KASHMIR
	JHRKND	JHARKHAND
	KER	KERALA
	KKN	KONKAN
	LKSDP	LAKSHADWEEP
	M MAHA	MADHYA MAHARASHTRA
	MAHA	MAHARASHTRA
	MANI	MANIPUR
	MEGHA	MEGHALAYA
	MIZO	MIZORAM
	MP	MADHYA PRADESH
	MRTHWD	MARATHWADA
	NAGA	NAGALAND
	N COTLAP	NORTH COASTAL ANDHRA PRADESH
	NIK	NORTH INTERIOR KARNATAKA
	ORS	ORISSA
	PJB	PUNJAB
	RAJ	RAJASTHAN
	RYLSM	RAYALASEEMA
	SAU & KUTCH	SAURASHTRA & KUTCH
	SHWB	SUB-HIMALAYAN WEST BENGAL
	SIK	SOUTH INTERIOR KARNATAKA
	SKM	SIKKIM
	TLNGN	TELANGANA
	TN	TAMIL NADU
	TRP	TRIPURA
	UP	UTTAR PRADESH
	UTRKND	UTTARAKHAND
	VID	VIDHARBHA
	WB	WEST BENGAL
	ARSEA	ARABIAN SEA
	ILS	ISLANDS
MISCELLANEOUS	ASSW	IN ASSOCIATION WITH
	ASSTD	ASSOCIATED
	LLC	LOW LEVEL CIRCULATION
	EMBDD	EMBEDDED

	N/HOOD	NEIGHBOURHOOD
	EXT	EXTREME