

## இந்திய அரசு

இந்திய வானிலை ஆய்வு துறை  
மண்டல வானிலை ஆய்வு மையம்  
6, கல்லூரி சாலை  
சென்னை - 600006  
தொலைபேசி : 044- 28271951



## GOVERNMENT OF INDIA

INDIA METEOROLOGICAL DEPARTMENT  
Regional Meteorological Centre  
6, College Road  
Chennai-600006  
Phone: 044- 28271951

DATE: Sunday, October 9, 2022 (17 Asvina 1944)

Time of issue: 1230 Hrs IST

### DAILY WEATHER REPORT FOR TAMILNADU, PUDUCHERRY & KARAIKAL AREA

#### Summary of observations over Tamil Nadu and Puducherry recorded at 0830 hrs IST:

Rainfall occurred at many places over Tamilnadu. Light rain occurred over Puducherry and Karaikal.

**CHIEF AMOUNT OF RAINFALL IN CENTIMETERS:** Sholingur (dist Ranipet), Budalur (dist Thanjavur) 9 each, Rameswaram (dist Ramanathapuram), Sivakasi (dist Virudhunagar), R.s.mangalam (dist Ramanathapuram) 7each, Kariyapatti (dist Virudhunagar), Tirukattupalli (dist Thanjavur), Madurai South (dist Madurai), Paramakudi (dist Ramanathapuram), R.k.pet (dist Tiruvallur) 6 each, Perambalur (dist Perambalur), Tallakulam (dist Madurai), Tiruttani (dist Tiruvallur), Tirupuvanam (dist Sivaganga), Viraganur Dam (dist Madurai) 5 each, Thuraiyur (dist Trichy), Thandampettai (dist Tiruvannamalai), Wallajah (dist Ranipet), Chittampatti (dist Madurai), Veeraganoor (dist Salem), Pamban (dist Ramanathapuram), Thankachimadam (dist Ramanathapuram), Theerthandathanam (dist Ramanathapuram), Kallakudi (dist Trichy), Lower Anaicut (dist Thanjavur) 4 each, Kadaladi (dist Ramanathapuram), Thiruvallangadu (dist Tiruvallur), Veppanthattai (dist Perambalur), Sankarapuram (dist Kallakurichi), Tozhudur (dist Cuddalore), Chettikulam (dist Perambalur), Pullambadi (dist Trichy), Red Hills (dist Tiruvallur), Melur (dist Madurai), Tiruttani Pto (dist Tiruvallur), Mudukulatur (dist Ramanathapuram), Vedaranyam (dist Nagapattinam), Ulundurpet (dist Kallakurichi), Ponneri (dist Tiruvallur), Palacode (dist Dharmapuri), Illayangudi (dist Sivaganga), Tiruvadana (dist Ramanathapuram), Arakonam (dist Ranipet) 3 each, Tondi (dist Ramanathapuram), Mandapam (dist Ramanathapuram), Vattanam (dist Ramanathapuram), Alangudi (dist Pudukkottai), Kancheepuram (dist Kancheepuram), Perambur (dist Chennai), Valinokam (dist Ramanathapuram), Eraiyur (dist Perambalur), Pappireddipatti (dist Dharmapuri), Chennai(n) (dist Chennai), Jayamkondam (dist Ariyalur), Watrap (dist Virudhunagar), Mgr Nagar (dist Chennai), Thuvakudi Imti (dist Trichy), Devakottai (dist Sivaganga), Chennai Ap (dist Chennai), Thiruvaidaimaruthur (dist Thanjavur), Srivilliputhur (dist Virudhunagar), Sholinganallur (dist Chennai), Vilathikulam (dist Toothukudi), Labbaikudikadu (dist Perambalur), Cholavaram (dist Tiruvallur), Gandarvakottai (dist Pudukkottai), Manjalaru (dist Thanjavur) 2 each, Avudayarkoil (dist Pudukkottai), Chinnakalar (dist Coimbatore), Ponmalai (dist Trichy), Arcot (dist Ranipet), Grand Anaicut (dist Thanjavur), Thanjavur (dist Thanjavur), Mimisal (dist Pudukkottai), Pilavakkal (dist Virudhunagar), Tirupathur (dist Sivaganga), Danishpet (dist Salem), Panruti (dist Cuddalore), Keeranur (dist Pudukkottai), Anna University (dist Chennai), Usilampatti (dist Madurai), Trp Town (dist Trichy), Samayapuram (dist Trichy), Sivaganga (dist Sivaganga), Kumbakonam (dist Thanjavur), Thenparanadu (dist Trichy), Vembakkam (dist Tiruvannamalai), Chengam (dist Tiruvannamalai), Kalavai Aws (dist Ranipet), Tambaram (dist Chengalpattu), Musiri (dist Trichy), Aruppukottai (dist Virudhunagar), Dgp Office (dist Chennai), Pelandurai (dist Cuddalore), Polur (dist Tiruvannamalai), Pallipattu (dist Tiruvallur), Dharmapuri (dist Dharmapuri), Ambathur (dist Tiruvallur), Trp Ap (dist Trichy), Arantangi (dist Pudukkottai), Tiruvallur (dist Tiruvallur), Manamadurai (dist Sivaganga), Pennagaram (dist Dharmapuri), Paiyur Aws (dist Krishnagiri), Rajapalayam (dist Virudhunagar), Chengalpattu (dist Chengalpattu), Vathalai Anaicut (dist Trichy), Mangalapuram (dist Namakkal), Yercaud (dist Salem), Kalugumalai (dist Toothukudi), Cheyyar (dist Tiruvannamalai), Ramanathapuram (dist Ramanathapuram), Uthiramerur (dist Kancheepuram), Vepur (dist Cuddalore), Kamudhi (dist Ramanathapuram), Pulipatti (dist Madurai) 1 each.

## FORECAST & WARNINGS FOR TAMILNADU AND PUDUCHERRY FOR NEXT FIVE DAYS

Day 1(09.10.2022)	<p>Light to Moderate rain is likely to occur at many places with isolated thunderstorm and lightning over Tamilnadu, Puducherry &amp; Karaikal area.</p> <p><b>Heavy to very heavy rain is likely to occur at isolated places over Nilgiris, Nagapattinam, Thanjavur and Tiruvarur districts of Tamilnadu. Heavy rain is likely to occur at isolated places over Pudukkottai, Sivaganga, Virudhunagar, Dindigul, Madurai, Coimbatore, Erode, Karur, Namakkal, Salem, Tiruchirappalli, Dharmapuri, Ariyalur, Cuddalore, Perambalur, Vellore, Ramanathapuram, Krishnagiri, Tiruppur, Kallakurichi, Tirupattur and Mayiladuthurai districts of Tamilnadu, Puducherry and Karaikal.</b></p>
Day 2(10.10.2022)	<p>Light to Moderate rain is likely to occur at many places with isolated thunderstorm and lightning over Tamilnadu, Puducherry &amp; Karaikal area.</p> <p><b>Heavy rain is likely to occur at isolated places over Nilgiris, Pudukkottai, Sivaganga, Virudhunagar, Dindigul, Madurai, Theni, Coimbatore, Erode, Karur, Namakkal, Salem, Tiruchirappalli, Dharmapuri, Ariyalur, Cuddalore, Nagapattinam, Perambalur, Thanjavur, Tiruvarur, Krishnagiri, Tiruppur, Kallakurichi, Tenkasi, Tirupattur and Mayiladuthurai districts of Tamilnadu and Karaikal</b></p>
Day 3(11.10.2022)	<p>Light to Moderate rain is likely to occur at many places with isolated thunderstorm and lightning over Tamilnadu, Puducherry &amp; Karaikal area.</p> <p><b>Heavy rain is likely to occur at isolated places over Nilgiris, Dindigul, Madurai, Theni, Coimbatore, Erode, Karur, Namakkal, Salem, Tiruchirappalli, Dharmapuri, Vellore, Krishnagiri, Tiruppur and Tirupattur districts of Tamilnadu.</b></p>
Day 4(12.10.2022)	<p>Light to Moderate rain is likely to occur at many places with isolated thunderstorm and lightning over Tamilnadu, Puducherry &amp; Karaikal area.</p> <p><b>Heavy rain is likely to occur at isolated places over Nilgiris, Coimbatore, Erode, Salem, Dharmapuri, Cuddalore, Tiruvallur, Tiruvannamalai, Vellore, Viluppuram, Krishnagiri, Kallakurichi, Tirupattur and Ranipet districts of Tamilnadu and Puducherry.</b></p>
Day 5(13.10.2022)	<p>Light to Moderate rain is likely to occur at a few places with isolated thunderstorm and lightning over Tamilnadu, Puducherry &amp; Karaikal area.</p> <p><b>Heavy rain is likely to occur at isolated places over Nilgiris, Coimbatore, Erode, Salem, Dharmapuri, Kancheepuram, Tiruvallur, Tiruvannamalai, Vellore, Krishnagiri, Tirupattur and Ranipet districts of Tamilnadu.</b></p>

### LOCAL FORECAST FOR CHENNAI CITY AND NEIGHBOURHOOD:

**For next 24 HRS:** Sky condition is likely to be partly cloudy. Moderate rain with thunderstorm and lightning is likely to occur in some areas. Maximum and minimum temperature is likely to be around 33-34°C and 25-26°C respectively.

**For next 48 HRS:** Sky condition is likely to be partly cloudy. Moderate rain with thunderstorm and lightning is likely to occur in some areas. Maximum and minimum temperature is likely to be around 33-34°C and 25-26°C respectively.

### DESCRIPTION OF TEMPERATURE:

**Madurai AP** recorded highest maximum temperature of 37.0 °C in the region.

**MAXIMUM TEMPERATURE (24 HOURS CHANGE):**

Markedly rise (4.1° C or more)	-----
Appreciably rise (2.1° C to 4.0° C)	Over Chennai, Kanyakumari and Tiruvallur districts.
Appreciable fall (-2.1 ° C to -4.0° C)	Over Tirupattur district.
Markedly fall (-4.1° C or less)	-----
No large change (-2.1° C to 2.0° C)	Over rest of the region.

**MAXIMUM TEMPERATURE (DEPARTURE):**

Markedly above normal (5.1 °C or more)	-----
Appreciably above Normal (3.1- 5.0 °C)	Over Madurai district.
Above normal (1.6° C to 3.0° C)	Over Kanyakumari, Karur and Ramanathapuram districts.
Below normal (-1.6 ° to -3.0 ° C)	Over Cuddalore, Thanjavur and Tirupattur districts, Puducherry and Karaikal.
Appreciably below normal (-3.1 to -5.0°C)	-----
Markedly below normal (-5.1 or less)	-----
Normal (-1.5° C to 1.5° C)	Over rest of the region.

Madurai City recorded lowest minimum temperature of 21.0 °C in the plains of the region.

**MINIMUM TEMPERATURE (24 HOURS CHANGE):**

Markedly fall (-4.1° C or less)	-----
Appreciable fall (-2.1° C to -4.0°)	Over Ramanathapuram district.
Appreciable rise (2.1 ° C to 4.0°)	Over Nilgiris district.
Markedly rise (4.1° c or more)	-----
No large change (-2.0° C to 2.0° C)	Over rest of the region.

**MINIMUM TEMPERATURE (DEPARTURE):**

Markedly above normal (5.1 ° C or more)	-----
Appreciably above Normal (3.1° C to 5.0 ° C)	-----
Above Normal (1.6 °C to 3.0 °C)	-----
Below normal (-1.6 ° to -3.0 ° C)	Over Ramanathapuram district.
Appreciably below normal (- 3.1° C to -5.0°C)	-----
Markedly below normal (- 5.1° C or less)	-----
Normal (-1.5° C to 1.5° C)	Over rest of the region.

P. S. KANNAN  
SCIENTIST 'E'

For Deputy Director General of Meteorology  
Regional Meteorological Centre, Chennai

For more details visit [www.mausam.imd.gov.in/chennai](http://www.mausam.imd.gov.in/chennai)

**OBSERVATIONS RECORDED AT 0830 HRS IST OF DATE:09-10-2022 (17 Asvina 1944 SAKA)**

Stations	Temperature Degrees celsius				Humidity percentage		Rainfall					Weather remarks
	Maximum		Minimum		At 0830 Hrs IST	Dep. from normal	Millimeters		Centimeters			
	Past 24 Hrs	Dep. from normal	Past 24 Hrs	Dep. from normal			Past 24 Hrs	Seasons total from	Departure from normal	Year's total from	Annual normal	
	°C	°C	°C	°C	%	%	mm	1-10-2022	mm	1-1-2022	cm	
Adiramapattinam	33.3	0.7	23.7	-1.2	100	22	3.7	26.8	-32.1	117	124	r
Chennai	32.3	-0.4	24.7	-0.4	87	5	20.3	57.9	4	69	140	r
Chennai_AP	32.3	-0.7	23.9	-1.1	94	14	19.2	55.3	-2.1	62	138	r
Coimbatore_AP	32.6	0.3	22.7	0.4	90	7	0	5	-20.4	37	59	m*
Coonoor	21.6	-0.5	14.2	0.5	90	13	0	9.1	-46	107	159	
Cuddalore	30.6	-2.3	25.1	0.4	90	9	0.6	7.4	-44.9	60	134	r
Dharmapuri	30.2	-1.1	22.5	0.3	83	5	7	54	-4.8	76	91	r
Erode	34.8	--	22.4	--	81	--	tr	0.6	--	81	--	d
Kanyakumari	32.8	2.4	24.0	-0.6	72	-7	0.3	3.1	-17	28	75	r
KarurParamathi	35.0	2.4	23.5	-0.2	79	-2	0	9.4	--	43	59	
Karaikal	30.9	-1.7	24.9	-0.3	98	17	1.4	2.2	-40.1	56	150	r
Kodaikanal	20.5	1.8	10.6	-0.7	96	13	tr	1.8	-57.4	161	158	d
Madurai city	35.0	0.8	21.0	-3.1	98	21	63.6	63.6	--	81	--	r
Madurai_AP	37.0	3.1	23.6	-0.4	96	22	4.2	4.2	-39.3	70	85	r
Nagapattinam	32.0	-0.8	25.0	-0.5	100	18	5.2	5.9	-31.4	76	143	r
Palayamkottai	36.2	1.1	25.0	-0.4	64	-7	0	0	-22.4	30	73	
Pamban	34.0	1.3	23.6	-2.9	90	15	37	37.9	23.7	46	91	r
Parangipettai	32.5	--	25.0	--	98	--	1.0	1	-35.5	62	139	r
Puducherry	31.2	-1.9	23.4	-1.4	90	6	0.7	25.1	-27.3	59	134	r
Salem	33.3	0.7	21.7	-1	86	4	1.3	22.7	-38.8	93	102	r
Thanjavur	32.0	-2.3	24.4	-0.2	81	-5	5.6	6.8	-44	59	95	r
Thirupattur	29.2	-2.8	23.8	1.3	90	6	1.3	12.7	-48.6	101	95	r
Tiruchirappalli_AP	33.6	0	24.0	-0.4	91	12	9.9	9.9	-34.1	64	87	r
Tiruthani	32.5	-0.5	23.0	0	92	14	28.6	96	45.7	73	101	r
Thoothukudi	--	--	--	--	--	--	--	--	--	--	--	
Tondi	34.1	1.9	23.4	-1.8	90	12	23.7	33.1	5.7	51	88	r
Udagamandalam	19.0	-0.7	11.1	0.2	88	0	0	6.6	-43.6	143	116	
Valparai	24.5	--	15.5	--	96	--	2.0	30.4	--	425	--	r
Vellore	32.1	-0.9	23.7	0.8	90	6	2.8	31	-19.6	70	103	r

\*Weather at 0830 hours IST. Other remarks refer to preceding 24 hours. NA-Not avble D-Duststorm l-Lightning d-drizzle m-mist s-snow r-rain h-hail f-fog p-shower z-haze t-thunderstorm tr-rainfall not measurable. Tr-rainfall 0.01 to 0.49 cm AP-Airport plus sign omitted when departures above normal.

**GOVERNMENT OF INDIA, MINISTRY OF EARTH SCIENCES**

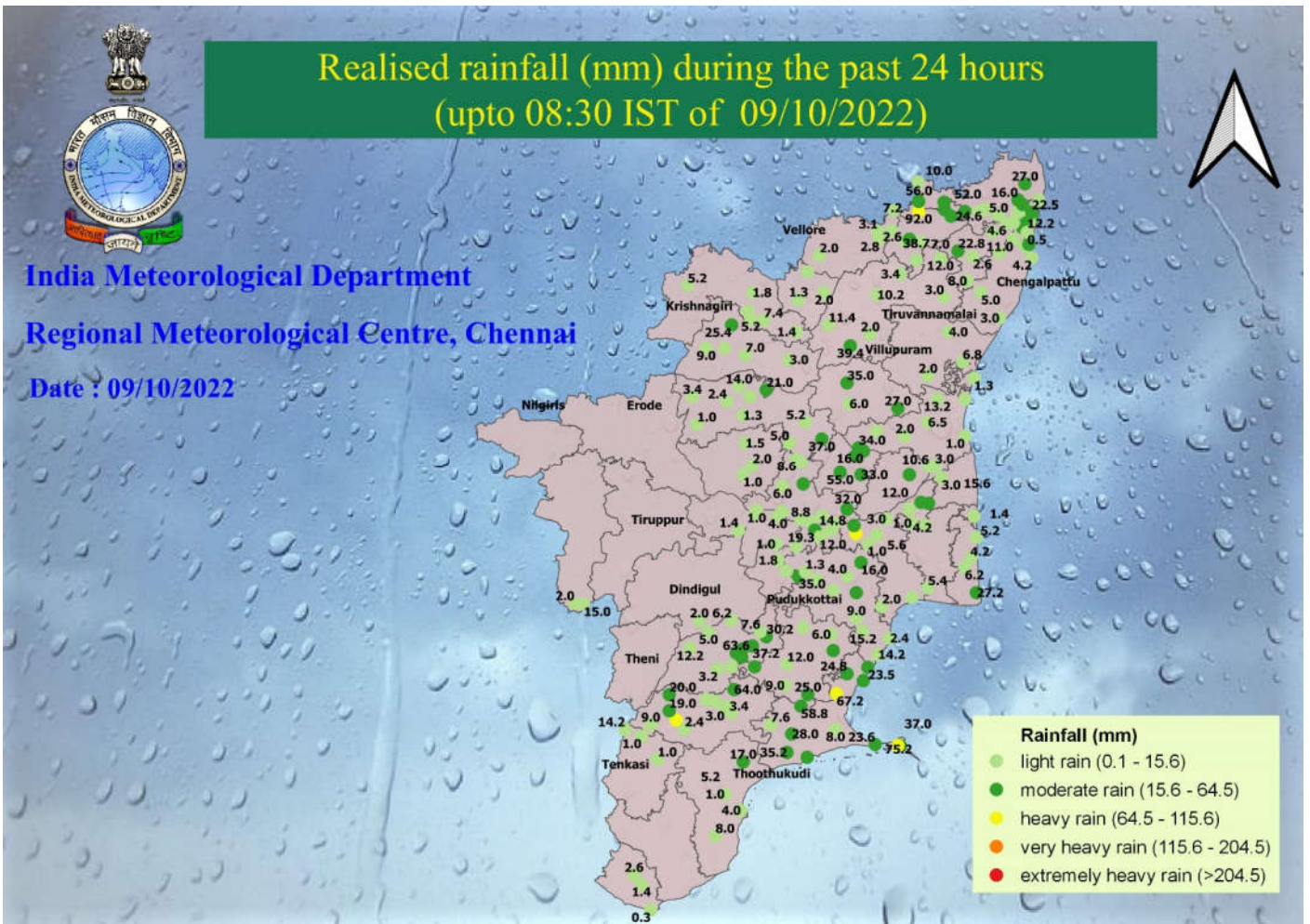
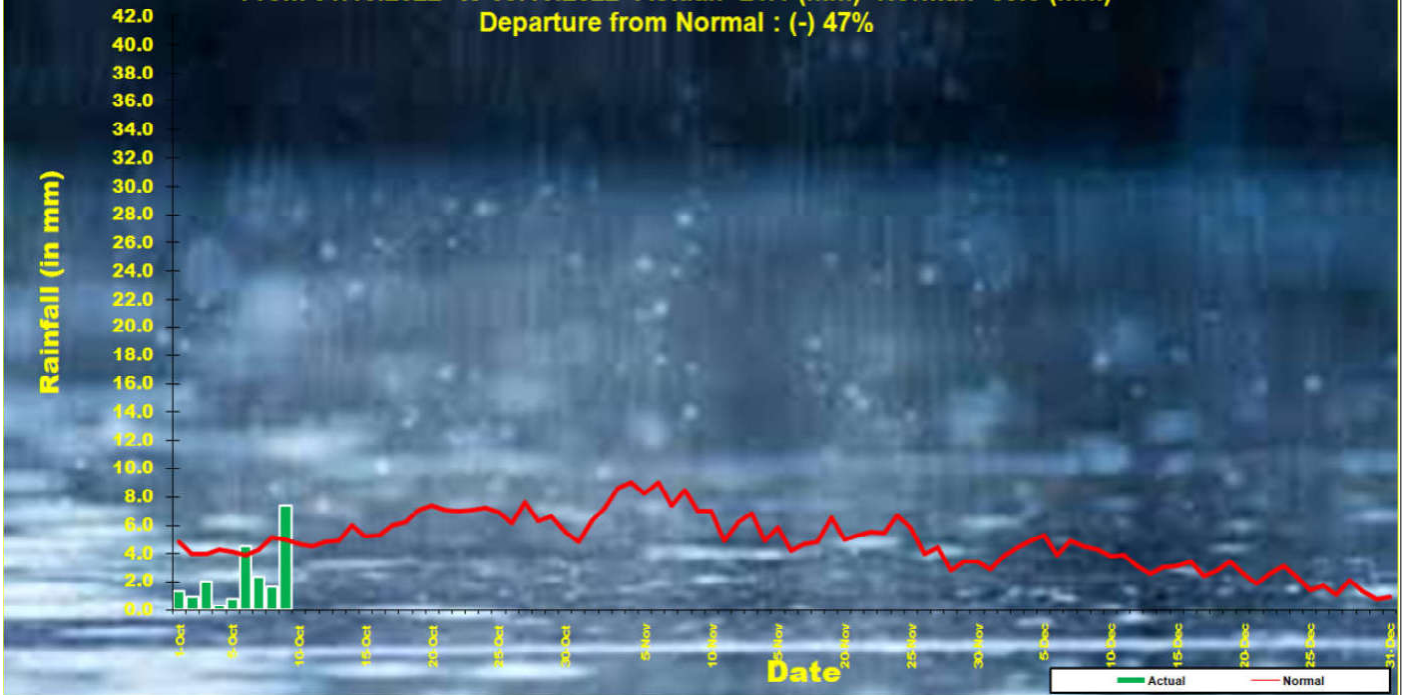
**INDIA METEOROLOGICAL DEPARTMENT**

**REGIONAL METEOROLOGICAL CENTRE, CHENNAI**

**Districtwise daily / seasonal rainfall distribution for Tamil Nadu & Puducherry**

<b>NE-MONSOON RAINFALL 2022</b>		<b>09.10.2022</b>			<b>From 01.10.2022 to 09.10.2022</b>		
<b>CODE</b>	<b>NAME</b>	<b>ACTUAL in mm</b>	<b>NORMAL in mm</b>	<b>PDN*</b>	<b>ACTUAL in mm</b>	<b>NORMAL in mm</b>	<b>PDN*</b>
	<b>STATES</b>						
31	<b>TAMIL NADU</b>	7.4	5.0	48	21.1	39.5	-47
	<b>MET. SUBDIVISIONS</b>						
31	<b>TAMIL NADU &amp; PUDUCHERRY</b>						
534	<b>ARIYALUR</b>	5.0	4.7	6	5.0	41.5	-88
687	<b>CHENGALPATTU</b>	3.3	4.2	-23	42.0	43.2	-3
461	<b>CHENNAI</b>	13.7	5.7	140	36.8	52.1	-29
462	<b>COIMBATORE</b>	1.4	3.8	-63	13.6	35.1	-61
463	<b>CUDDALORE</b>	5.3	5.9	-11	8.2	42.6	-81
464	<b>DHARMAPURI</b>	9.4	9.9	-5	30.0	58.4	-49
465	<b>DINDIGUL</b>	0.3	5.3	-95	8.1	42.3	-81
466	<b>ERODE</b>	0.0	4.2	-100	11.9	37.5	-68
688	<b>KALLAKURICHI</b>	13.6	5.7	139	15.8	45.2	-65
467	<b>KANCHEEPURAM</b>	7.3	4.5	62	73.7	49.2	50
468	<b>KANYAKUMARI</b>	0.3	8.1	-96	11.1	58.6	-81
636	<b>KARAIKAL</b>	1.4	5.5	-75	2.2	36.9	-94
469	<b>KARUR</b>	0.8	4.7	-82	4.2	30.1	-86
470	<b>KRISHNAGIRI</b>	2.5	8.3	-70	34.4	58.0	-41
471	<b>MADURAI</b>	19.4	5.5	253	21.8	41.5	-47
695	<b>MAYILADUTHURAI</b>	0.6	4.2	-86	0.6	39.6	-98
472	<b>NAGAPATTINAM</b>	10.7	3.6	197	25.0	32.4	-23
473	<b>NAMAKKAL</b>	1.3	7.5	-83	9.4	39.4	-76
474	<b>NILGIRIS</b>	0.0	7.1	-100	21.8	53.1	-59
475	<b>PERAMBALUR</b>	23.6	6.8	247	24.6	38.2	-36
476	<b>PUDUCHERRY</b>	1.3	4.8	-73	25.7	61.0	-58
477	<b>PUDUKKOTTAI</b>	6.1	3.6	69	11.2	33.6	-67
478	<b>RAMANATHAPURAM</b>	33.4	2.8	1093	41.9	26.3	59
689	<b>RANIPET</b>	31.4	3.6	771	59.8	40.8	47
479	<b>SALEM</b>	6.5	8.5	-24	26.8	49.4	-46
480	<b>SIVAGANGA</b>	19.5	3.8	412	25.6	41.4	-38
690	<b>TENKASI</b>	0.4	2.9	-86	7.5	23.0	-67
481	<b>THANJAVUR</b>	13.6	4.5	203	20.6	37.8	-45
482	<b>THENI</b>	0.0	4.7	-100	3.2	33.9	-91
483	<b>TIRUNELVELI</b>	0.0	2.2	-100	0.9	16.9	-95
691	<b>TIRUPATTUR</b>	1.2	3.6	-67	22.7	43.7	-48
535	<b>TIRUPPUR</b>	0.0	4.3	-100	10.6	30.7	-65
484	<b>TIRUVALLUR</b>	14.7	4.5	227	48.2	44.0	10
485	<b>TIRUVANNAMALAI</b>	9.9	5.6	77	43.8	50.8	-14
486	<b>TIRUVARUR</b>	1.2	2.8	-58	6.5	35.5	-82
488	<b>TOOTHUKUDI</b>	1.8	2.7	-35	5.8	16.7	-65
487	<b>TRICHY</b>	12.5	6.2	102	14.0	40.2	-65
489	<b>VELLORE</b>	2.2	4.3	-48	18.7	44.4	-58
490	<b>VILLUPURAM</b>	2.6	3.4	-25	48.8	43.3	13
491	<b>VIRUDHUNAGAR</b>	16.9	3.8	344	18.5	29.6	-38
	<b>SUBDIVISION RAINFALL</b>	7.4	5.0	47	21.1	39.5	-47
<b>LEGEND</b>	<b>PDN*</b>	<b>Percentage Departure from Normal</b>					
	<b>**</b>	<b>Rainfall for the 24 hrs ending at 0830 hrs of date</b>					

**NE Monsoon Rainfall 2022 for Tamilnadu and Puducherry**  
 From 01.10.2022 to 09.10.2022 Actual: 21.1 (mm) Normal: 39.5 (mm)  
 Departure from Normal : (-) 47%



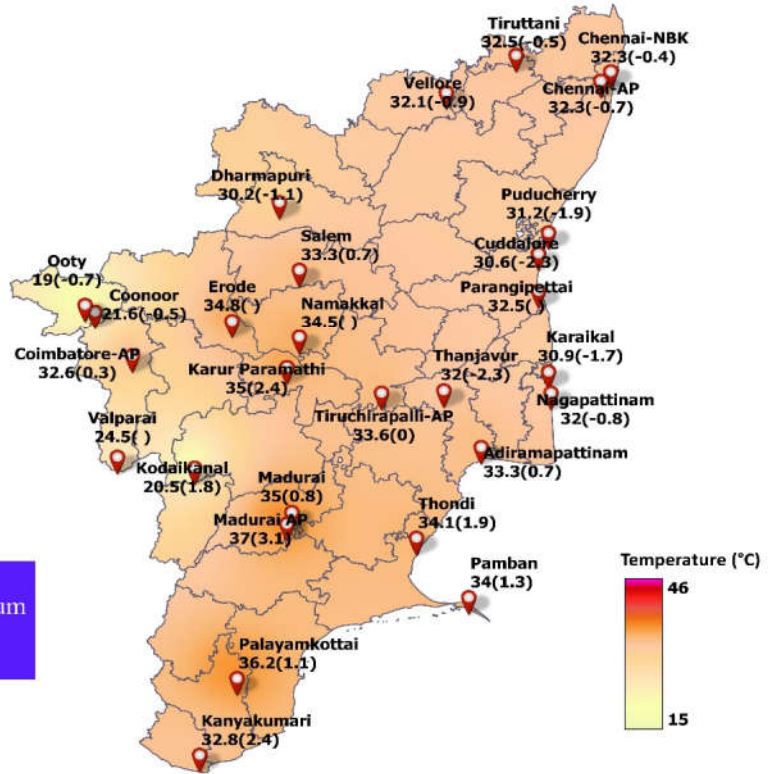


## Realised Maximum Temperature (°C) in the past 24 Hrs (upto 0830 IST of 09/10/2022 ) and its departure from normal(°C)



India Meteorological Department  
Regional Meteorological Centre, Chennai

Date: 09/10/2022



The highest temperature recorded : 37°C  
Place : Madurai AP

N.B. The departure from normal maximum temperature is given in brackets.

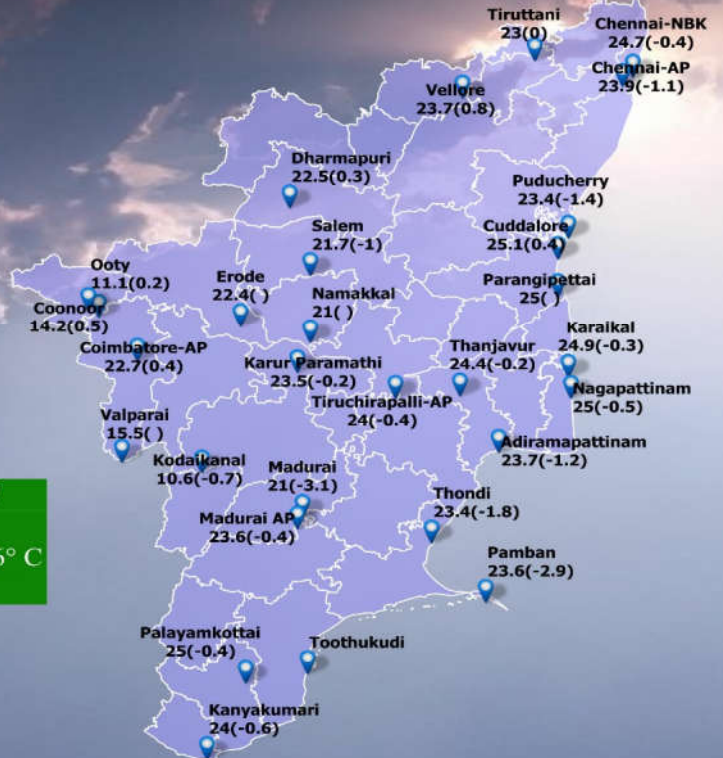


## Realised Minimum Temperature (°C) in the past 24 Hrs (upto 0830 IST of 09/10/2022 ) and its departure from normal(°C)



India Meteorological Department  
Regional Meteorological Centre, Chennai

Date : 09/10/2022



The lowest temperature recorded in the plains : 21° C  
Place : Madurai & Namakkal  
The lowest temperature recorded in the hilly region : 10.6° C  
Place : Kodaikanal

N.B. The departure from normal minimum temperature is given in brackets.

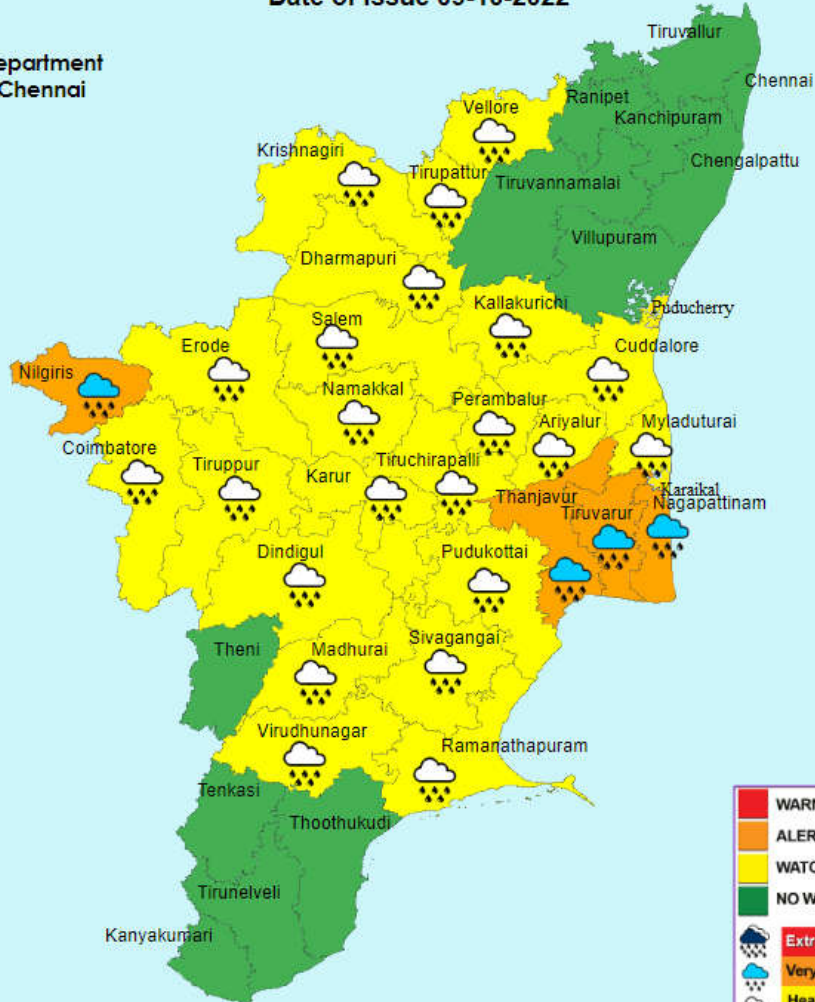


India Meteorological Department  
Regional Met Centre, Chennai

## Warning - Day 1

(Valid from 0830 hrs IST of 09-10-2022 to 0830 hrs IST of 10-10-2022 )

Date of Issue 09-10-2022



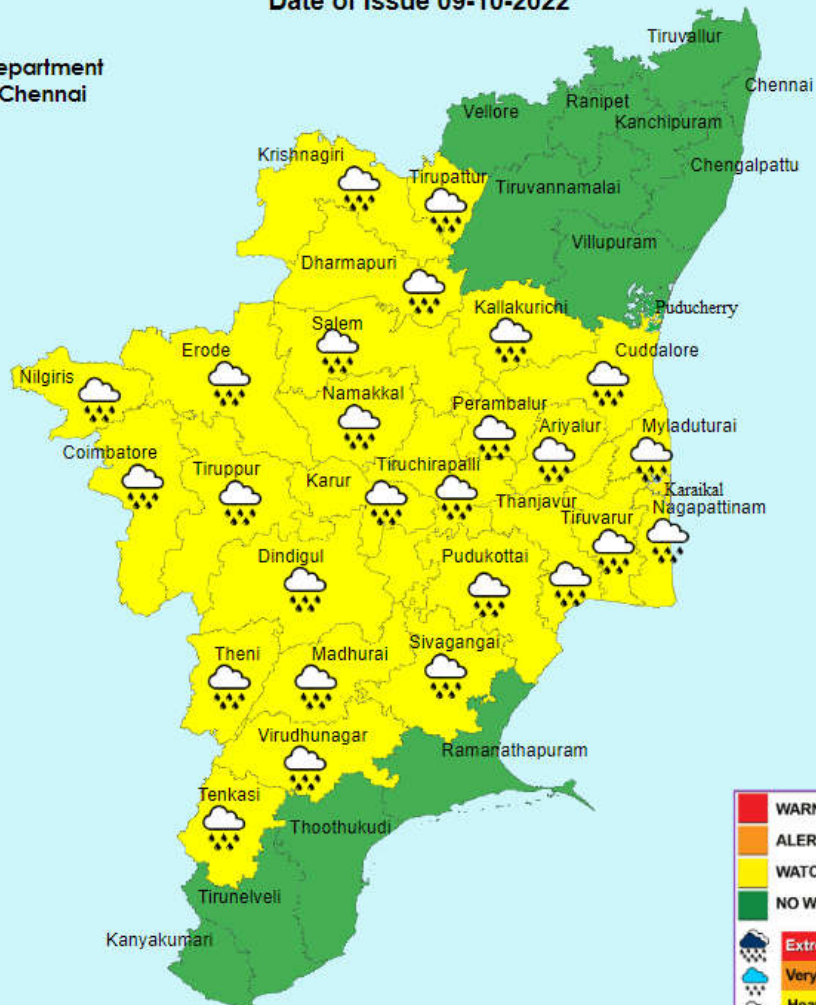




India Meteorological Department  
Regional Met Centre, Chennai

## Warning - Day 2

(Valid from 0830 hrs IST of 10-10-2022 to 0830 hrs IST of 11-10-2022 )  
Date of Issue 09-10-2022



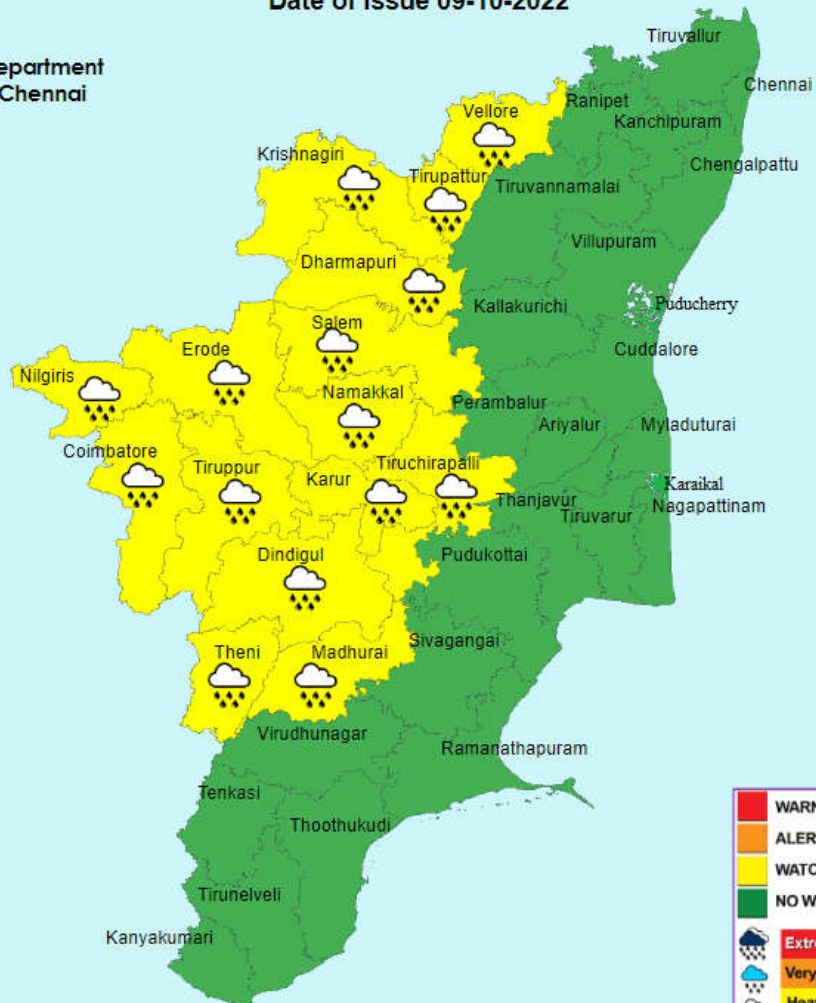
	<b>WARNING (TAKE ACTION)</b>
	<b>ALERT (BE PREPARED)</b>
	<b>WATCH (BE UPDATED)</b>
	<b>NO WARNING (NO ACTION)</b>
	<b>Extremely Heavy Rainfall &gt; 204.4 mm.</b>
	<b>Very Heavy Rainfall 115.6 to 204.4 mm.</b>
	<b>Heavy Rainfall 64.5 to 115.5 mm.</b>



India Meteorological Department  
Regional Met Centre, Chennai

## Warning - Day 3

(Valid from 0830 hrs IST of 11-10-2022 to 0830 hrs IST of 12-10-2022 )  
Date of Issue 09-10-2022



	<b>WARNING (TAKE ACTION)</b>
	<b>ALERT (BE PREPARED)</b>
	<b>WATCH (BE UPDATED)</b>
	<b>NO WARNING (NO ACTION)</b>
	<b>Extremely Heavy Rainfall &gt; 204.4 mm.</b>
	<b>Very Heavy Rainfall 115.6 to 204.4 mm.</b>
	<b>Heavy Rainfall 64.5 to 115.5 mm.</b>

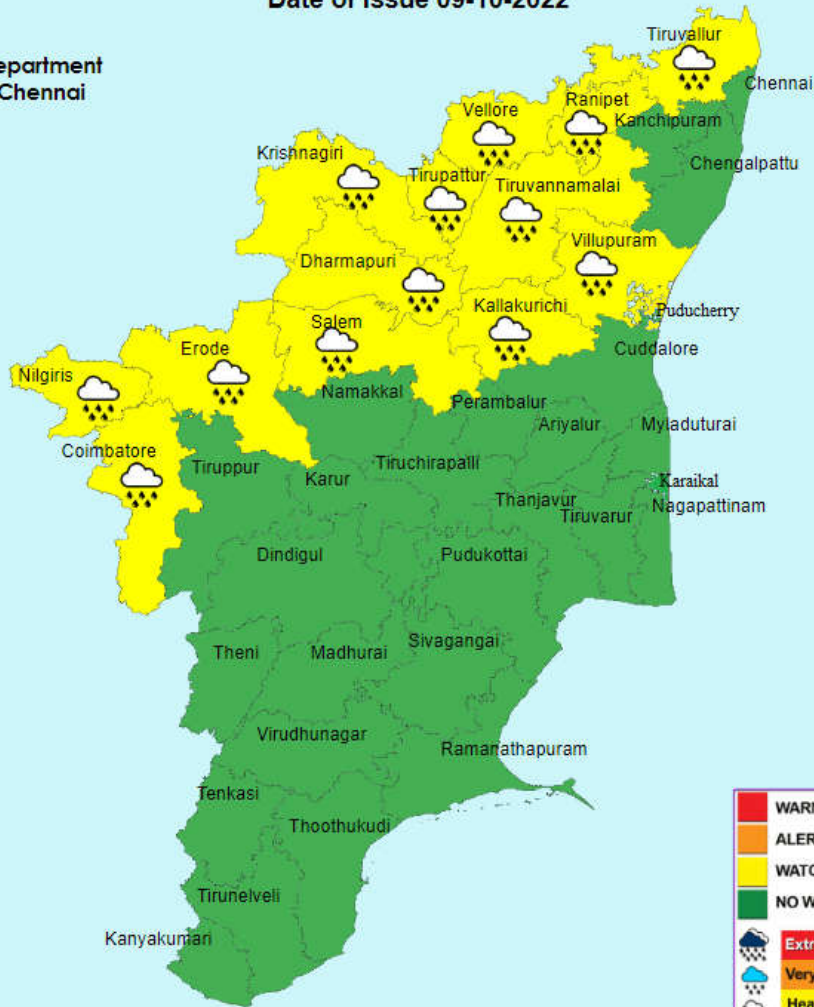


India Meteorological Department  
Regional Met Centre, Chennai

## Warning - Day 4

(Valid from 0830 hrs IST of 12-10-2022 to 0830 hrs IST of 13-10-2022 )

Date of Issue 09-10-2022



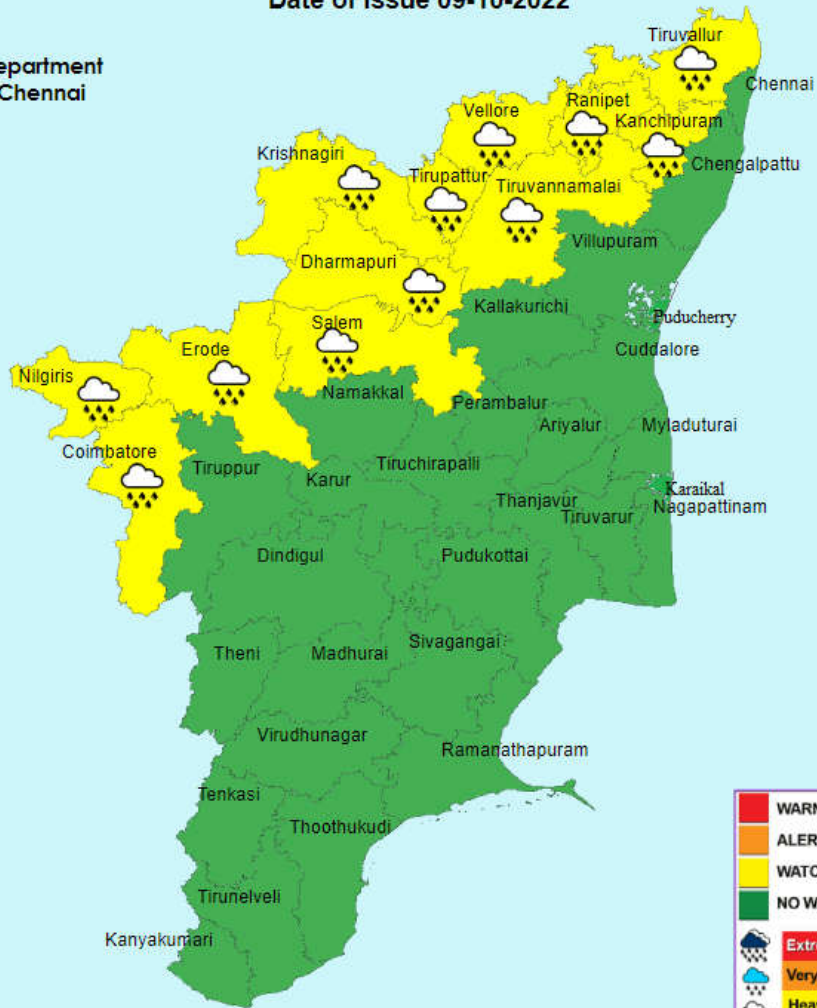
	<b>WARNING (TAKE ACTION)</b>
	<b>ALERT (BE PREPARED)</b>
	<b>WATCH (BE UPDATED)</b>
	<b>NO WARNING (NO ACTION)</b>
	<b>Extremely Heavy Rainfall &gt; 204.4 mm.</b>
	<b>Very Heavy Rainfall 115.6 to 204.4 mm.</b>
	<b>Heavy Rainfall 64.5 to 115.5 mm.</b>



India Meteorological Department  
Regional Met Centre, Chennai

## Warning - Day 5

(Valid from 0830 hrs IST of 13-10-2022 to 0830 hrs IST of 14-10-2022 )  
Date of Issue 09-10-2022



	<b>WARNING (TAKE ACTION)</b>
	<b>ALERT (BE PREPARED)</b>
	<b>WATCH (BE UPDATED)</b>
	<b>NO WARNING (NO ACTION)</b>
	<b>Extremely Heavy Rainfall &gt; 204.4 mm.</b>
	<b>Very Heavy Rainfall 115.6 to 204.4 mm.</b>
	<b>Heavy Rainfall 64.5 to 115.5 mm.</b>

**Legends:**

<b>North Tamil Nadu (NTN) districts</b>	Chennai, Kancheepuram, Chengalpattu, Tiruvallur, Cuddalore, Villupuram, Kallakurichi, Thanjavur, Tiruvarur, Nagapattinam, Mayiladuthurai, Pudukottai, Vellore, Thirupattur, Ranipet, Tiruvannamalai, Krishnagiri, Salem, Dharmapuri, Namakkal, Nilgiris, Tiruppur, Coimbatore, Erode, Karur, Tiruchirapalli, Ariyalur, Perambalur.
<b>South Tamil Nadu (STN) districts</b>	Ramanathapuram, Tirunelveli, Thenkasi, Thoothukudi, Theni, Kanyakumari, Sivagangai, Virudhunagar, Dindigul, Madurai.
<b>Interior Tamil Nadu (ITN) districts</b>	Vellore, Thirupattur, Ranipet, Tiruvannamalai, Krishnagiri, Dharmapuri, Salem, Namakkal, Nilgiris, Tiruppur, Coimbatore, Erode, Karur, Tiruchirapalli, Ariyalur, Perambalur, Sivagangai, Virudhunagar, Theni, Dindigul, Madurai, Thenkasi, Kallakurichi.
<b>North interior Tamil Nadu (NITN) districts</b>	Vellore, Thirupattur, Ranipet, Kancheepuram, Tiruvannamalai, Krishnagiri, Dharmapuri, Salem, Namakkal, Nilgiris, Tiruppur, Coimbatore, Erode, Karur, Tiruchirapalli, Ariyalur, Perambalur.
<b>South interior Tamil Nadu (SITN) districts</b>	Sivagangai, Virudhunagar, Theni, Dindigul, Madurai, Thenkasi.
<b>Coastal Tamil Nadu (CTN) districts</b>	Chennai, Chengalpattu, Tiruvallur, Cuddalore, Villupuram, Thanjavur, Tiruvarur, Nagapattinam, Mayiladuthurai, Pudukottai, Ramanathapuram, Tirunelveli, Thoothukudi, Kanyakumari.
<b>North Coastal Tamil Nadu (NCTN) districts</b>	Chennai, Chengalpattu, Tiruvallur, Cuddalore, Villupuram, Thanjavur, Tiruvarur, Nagapattinam, Pudukottai, Mayiladuthurai.
<b>South Coastal Tamil Nadu (SCTN) districts</b>	Ramanathapuram, Tirunelveli, Thoothukudi, Kanyakumari.
<b>Delta districts</b>	Thanjavur, Tiruvarur, Nagapattinam, Mayiladuthurai.
<b>Western Ghat districts</b>	Nilgiris, Coimbatore, Theni, Dindigul, Tiruppur, Thenkasi, Virudhunagar
<b>PDC</b>	Puducherry & Karaikal area